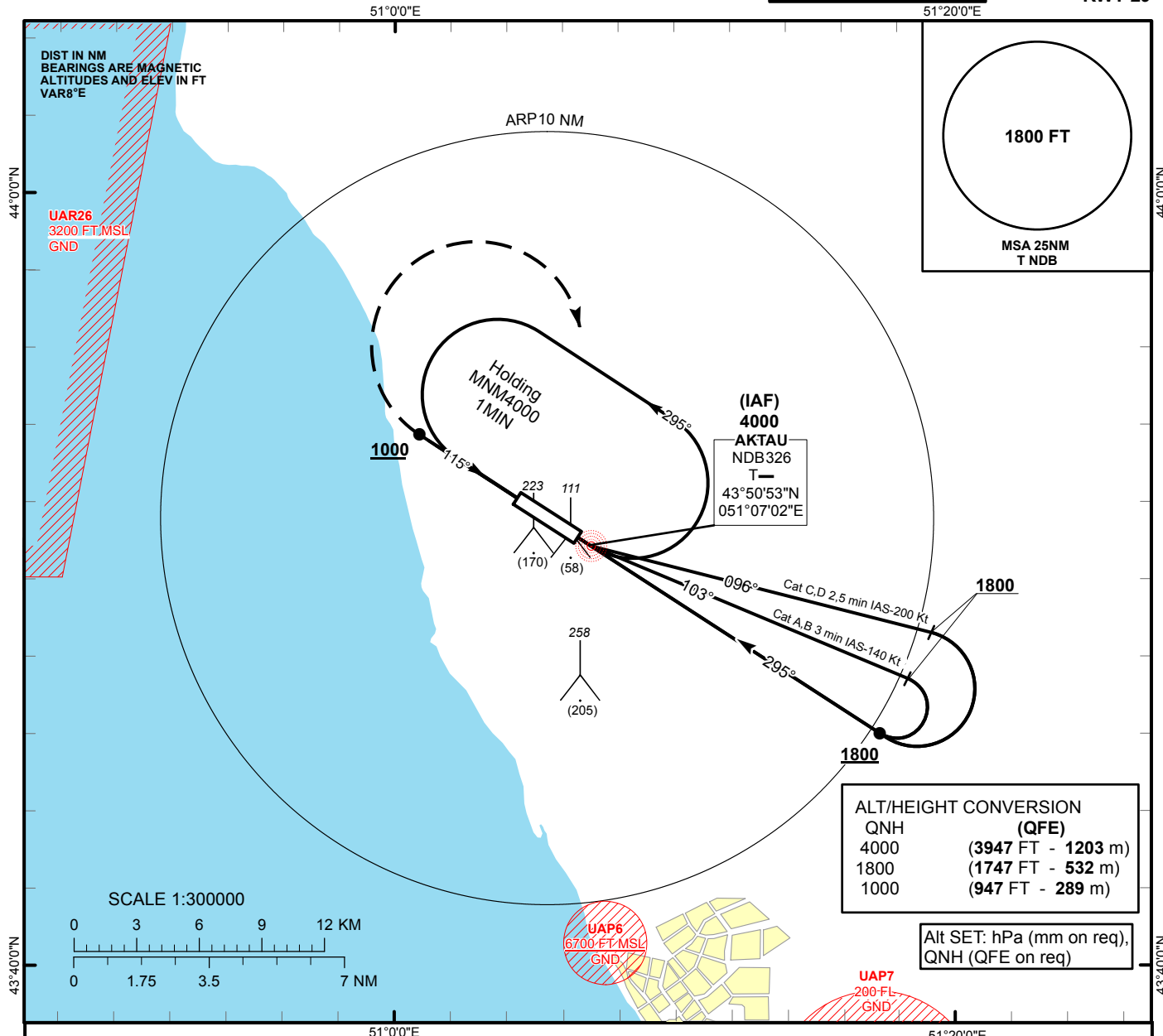


**INSTRUMENT
APPROACH
CHART - ICAO**

AERODROME ELEV **75 FT**
HEIGHTS RELATED TO
THR RWY 29 - ELEV **53 FT**

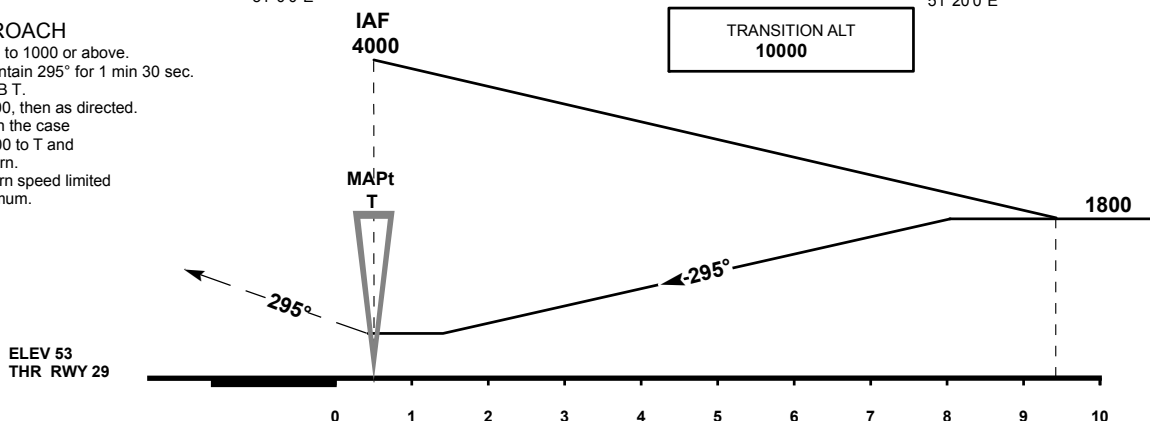
AKTAU TOWER 120.70
AKTAU ATIS (EN) 130.1
AKTAU ATIS (RU) 126.2

**AKTAU
NDB
RWY 29**



MISSED APPROACH

Climb on track 295° to 1000 or above.
After passing T maintain 295° for 1 min 30 sec.
Turn RIGHT to NDB T.
Climb initially to 1800, then as directed.
RADIO FAILURE: In the case of RCF climb to 4000 to T and join to holding pattern.
Missed approach turn speed limited to 250 Kt IAS maximum.



Aircraft Category		A	B	C	D
Straight-in Approach OCA/H	NDB	410(360)	410(360)	410(360)	410(360)
Aerodrome Operating Minima MDH ft x RVR(CMV)	NDB				

Change: Recalc.

AKTAU
NDB

AERONAUTICAL DATA TABULATION

NDB approach to RWY29 from T NDB	
Fix/point	Coordinates
T NDB (IAF)	43° 50' 52.6"N 051° 07' 01.8"E
THR RWY 29	43° 51' 09.72"N 051° 06' 24.49"E